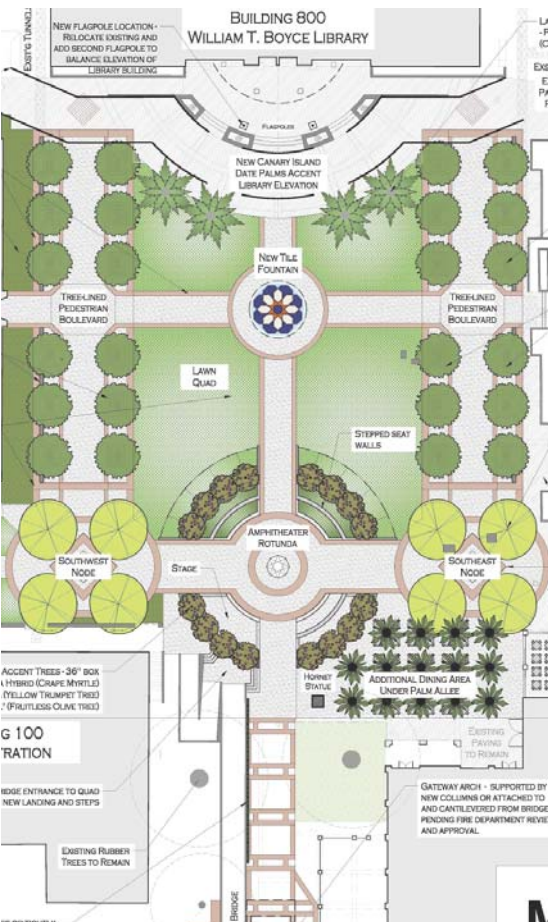


EDUCATIONAL: FULLERTON COLLEGE QUAD



BUILDING OWNER: Fullerton Community College
CONTACT: Claudette Dain - Vice President of Administrative Services (714) 992-7017
BUILDING TYPE: Campus Master Planning
SIZE: 1 acre
DATE COMPLETED: 2012
COST OF CONSTRUCTION: \$300K

Over the course of the last decade, our firm has collaborated on multiple projects on this campus with the architecture firm Flewelling and Moody.

In 2011, the North Orange County Community College District identified funding sources allowing it to redevelop the historic quad core of the Fullerton campus. Other than the original WPA buildings at the southwest and west sides of the quad, three new buildings had been built since 2007 forming an entirely new framework around the quad but leaving the historic hardscape and landscape disjointed with hazardous conditions for pedestrians.

Mark Beall & Associates developed a systematic approach to assess the various student and administrative groups garnering input to develop a comprehensive approach for the future. This included a central circular seating amphitheater with clearly expressed major axes connecting all major buildings and circulation paths as well as establishing a visual connection with Chapman Avenue.

Budgetary constraints kept the portions of the design from being fully realized during the first phase construction but ultimately provided pedestrian safe circulation and establishment of the central rotunda and primary circulation axes.